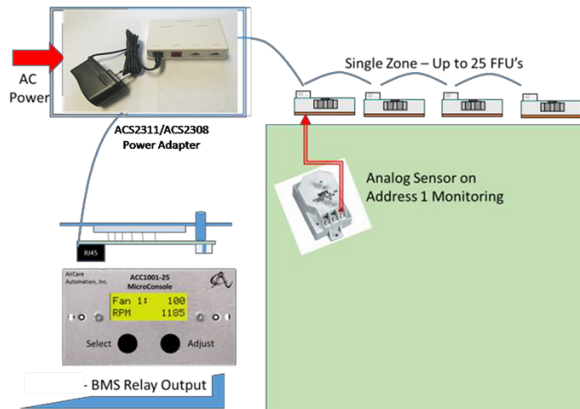
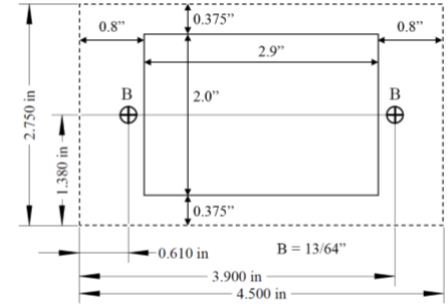


# ACC1001 - 25 units



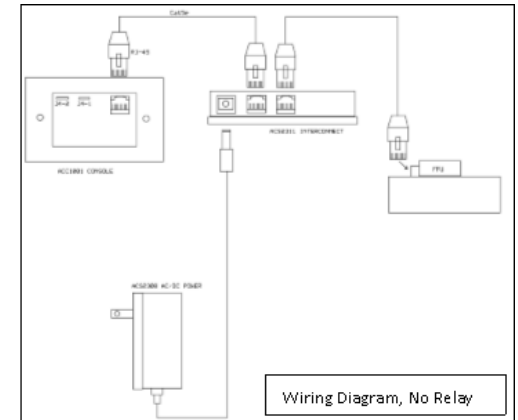
## DESCRIPTION

The ACC1001 is a single zone FFU Control Console that can mount in a panel cut-out or in a single-gang box. Designed for individual units (flow hoods), small cleanrooms and mini-environments, the ACC1001 can provide FFU control and monitoring .. with alarm notification. The unit can provide Individual or Global commands; accommodate EC (RPM feedback) FFU units or AC (pressure switch) monitoring – along with analog sensor for differential pressure transducer and/or air-flow sensor monitoring



## Functions / Features

- Control & Monitor up to 25 FFU fans**
- Individual and Global Commands
- RPM / Tach Feedback
- Audible Alarm on-board (+relay output)**
- Open/Closed Contact Switch Feedback
- Analog Sensor Monitor and Alarm
- Access Code Protected
- Field-Configure (#FFU, Sensor type, alarm limit)
- Panel / wall mount (remote power)



8204 N Lamar Blvd Suite B-11  
Austin, TX 78753  
PH:1-855-234-9237  
FAX:1-866-542-0612

Visit us at: [aircareautomation.com](http://aircareautomation.com)  
Email: [info@aircareautomation.com](mailto:info@aircareautomation.com)

DRAWING NAME

**ACC1001**

JOB NAME JOB #

**SUBMITTAL**

APPROVED BY

ENGINEER

NA

THIS INFORMATION IS THE SOLE PROPERTY OF AIRCARE AUTOMATION INC.  
ANY REPRODUCTION IN PART OR WHOLE WITHOUT THE WRITTEN PERMISSION OF  
AIRCARE AUTOMATION INC. IS PROHIBITED.

CONTRACTOR

NA

PROPRIETARY AND CONFIDENTIAL