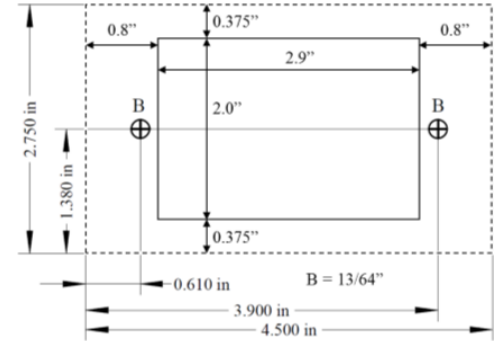


ACC1005 - ENVIRONMENT MONITOR CONSOLE



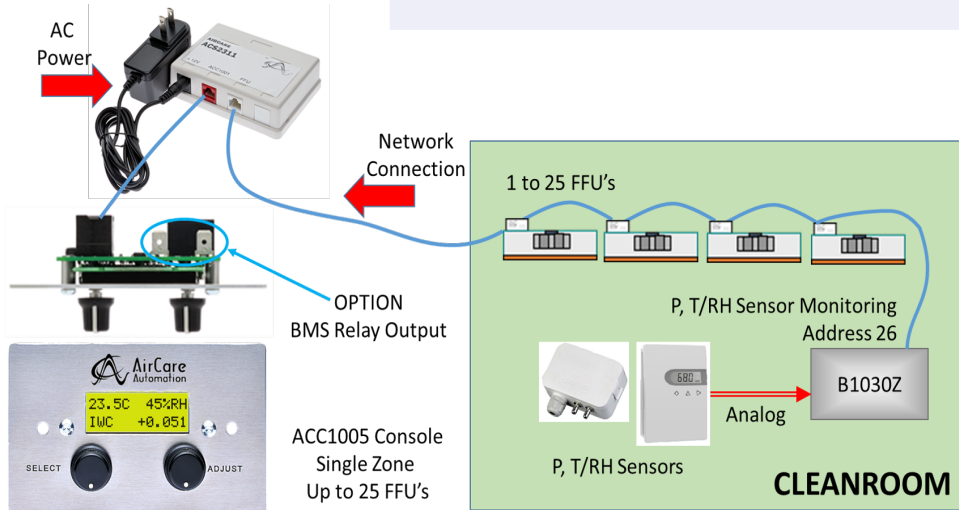
DESCRIPTION


The ACC1005 is an Environment Monitoring Console that can mount in a panel cut-out, recessed single-gang wall box, or supplied surface mount box. Designed to monitor and notify fault conditions for a single room (pressure, temperature and relative humidity) the ACC1005 provides monitoring and alarm notification. The unit can also provide FFU control for units outfitted with MODBUS interface circuitry. Visual display of sensor readings, audible and visual notification of fault condition are standard features of this unit



Functions / Features

- Polls & Displays P, T, RH**
- Alarm notification on Sensor fault**
- Control & Monitor up to 25 FFU fans**
- Individual and Global Commands
- RPM / Tach Feedback
- Audible Alarm on-board (+relay output)**
- Open/Closed Contact Switch Feedback
- Analog Sensor Monitor and Alarm
- Access Code Protected
- Field-Configure (#FFU, Sensor type, alarm limit)
- Panel / wall mount (remote power)



 <p>8204 N Lamar Blvd Suite B-11 Austin, TX 78753 PH:1-855-234-9237 FAX:1-866-542-0612 Visit us at: aircareautomation.com Email: info@aircareautomation.com</p>	DRAWING NAME	ACC1005	JOB NAME	JOB #	SUBMITTAL
	APPROVED BY		ENGINEER		NA
	<small>THIS INFORMATION IS THE SOLE PROPERTY OF AIRCARE AUTOMATION INC. ANY REPRODUCTION IN PART OR WHOLE WITHOUT THE WRITTEN PERMISSION OF AIRCARE AUTOMATION INC. IS PROHIBITED. PROPRIETARY AND CONFIDENTIAL</small>			CONTRACTOR	