

Overview

AirCare Automation's ACC7050 Control Console is a color touch screen Console that monitors and controls clean-room environments. It interfaces with all the AirCare interface control boards (AC- *VariPhase*[™] & EC- Module) using a standard MODBUS RTU protocol.

Facility ceiling drawings are scanned into the Console to give a facility/room/unit view through touch screen control. Customized to your facility monitoring and control needs, this Console will save time and money in your facility.



Functions/ Features

- Supports up to 200 units per port
 - Total 400 units
- Supports up to 50 groups
- 3 levels of control facility, group, unit
- Automatically monitor, generate and report errors (FFU errors or sensors limits)
- Individual fan speed adjustment
- Global speed adjustment facility/groups
- Global set-back speed adjustment
- Monitoring of fault sensors
- Monitoring for FFU set-point/RPM
- Menu driven configuration options
- Password protected user control: View, User, Master
- Clock/Calendar feature to set Standby periods
- Event Log

Environment

- Inside cabinet: IP20 / NEMA1 (case)
- Panel (front panel) : IP65/NEMA4X
- Operational temperature: 0 to 50°C (32 to 122°F)
- Storage temperature: -20 to 60°C (-4 to 140°F)
- Relative Humidity (RH): 5% to 95% (non-condensing)

Specifications

Power Supply

- Input Voltage : 24 VDC
- Max Current Consumption : 270mA@24V
- Back-up Battery : 7 years typical at 25°C

Display Screen

- LCD Type: TFT, white LED backlight
- Display Resolution, pixels: 320x240 (QVGA)
- Viewing Area: 5.7"
- Touch screen: Resistive, analog

Communication

- Two Isolated RS485 Serial Ports (MODBUS RTU)
 - Baud rate: 9600 & supports 400+ units
 - (RJ11) CAT 5E cable

I/Os *If any external sensors (i.e. pressure, humidity, temperature, particle counters) are required – consider the upgraded ACC7052 Console where BMS interface and Analog/Digital I/O's are included.*

Or contact AirCare Automation to explore other alternatives.

EXAMPLE SCREENS

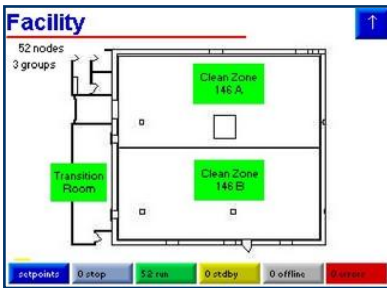
Main Screen

The main screen shows in the lower right corner the software version number, system time and date, and the current access level. Customer logo can be inserted.



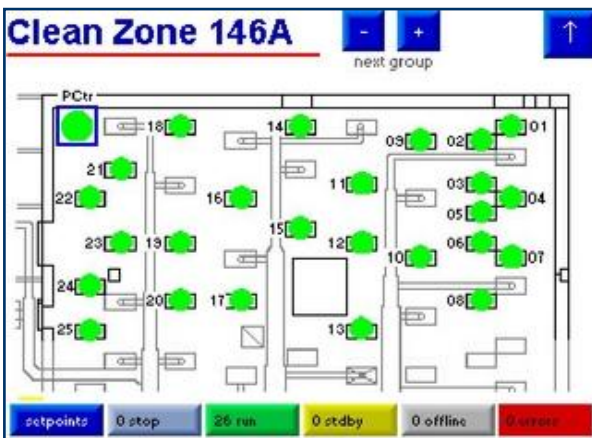
Facility Control

This screen shows the total number of nodes and groups defined in the system. It also shows the number of fans found with an error, offline, stopped, running and in standby.



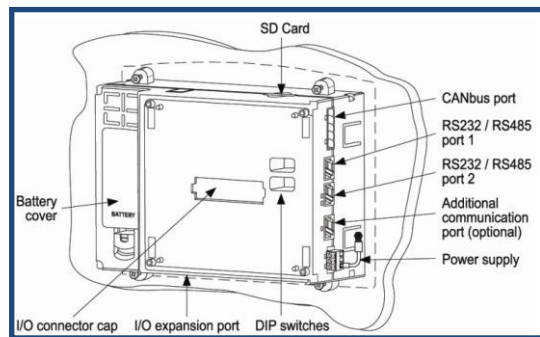
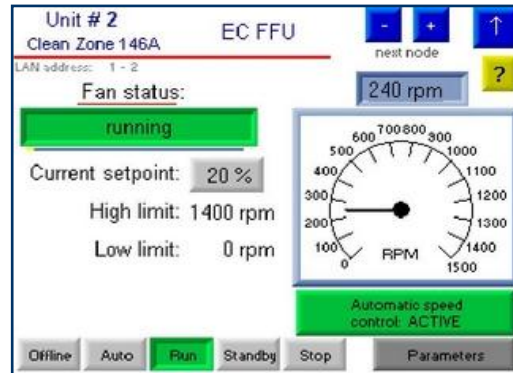
Group Control

This screen shows the total number of fans for each group. It also shows the number of fans found with an error, offline, stopped, running and in standby respectively for that group.



Fan/Unit Control

Fan/Unit control screen shows the status of the fan identified by the fan # and group name. The fan's current speed setting, and RPM value are shown (along with high/low limits). The fan's running speed can be adjusted by pressing the button. The AC Fan screen is the same without the RPM monitor.



Mechanical Dimensions

